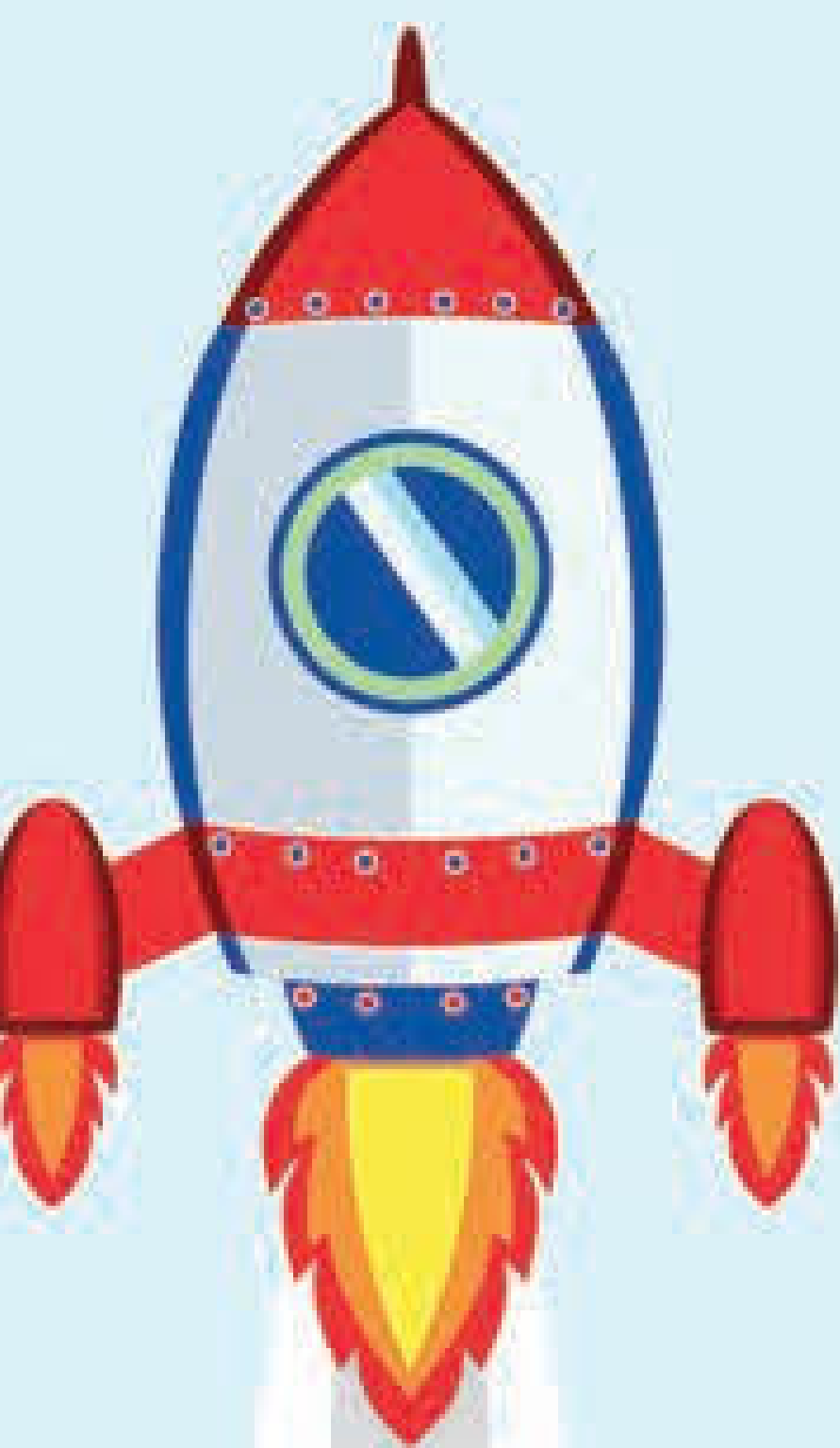


high school PARENT HANDBOOK

ADVENTURES IN SUMMER LEARNING
JULY 10-JULY 21, 2023



Imagine Where One
Summer Can Take You

PHILOSOPHY

A photograph of a classroom. In the foreground, a wooden desk is partially visible. Behind it is a white shelf holding several books and papers. The background is a large green chalkboard. The word 'PHILOSOPHY' is written in large, brown, hand-drawn capital letters across the top of the chalkboard.

Adventures in Summer Learning provides a program dedicated to students who are struggling in school. Every adult at Springer has an understanding of school difficulties and experience in providing research-based strategies. We are committed to providing an environment in which each student is introduced to strategies that enhance learning. Our summer program is a 2 week introduction to the strategies that are taught during the 9 month school year in the day school. The summer program does not take the place of participation in a full year school program for students with learning disabilities. This supportive environment offers your student the opportunity to begin to work toward his/her potential.

GENERAL INFORMATION



ATTENDANCE

Regular attendance is an important component of a student's progress. If your student is ill and unable to attend the program, please call by 8:30 a.m. each day to report the absence (513-871-6080 x210). You may also email: schamberlin@springer-ld.org.

If your student will be out due to vacation, please inform us of the days they will not be in attendance.

HEALTH

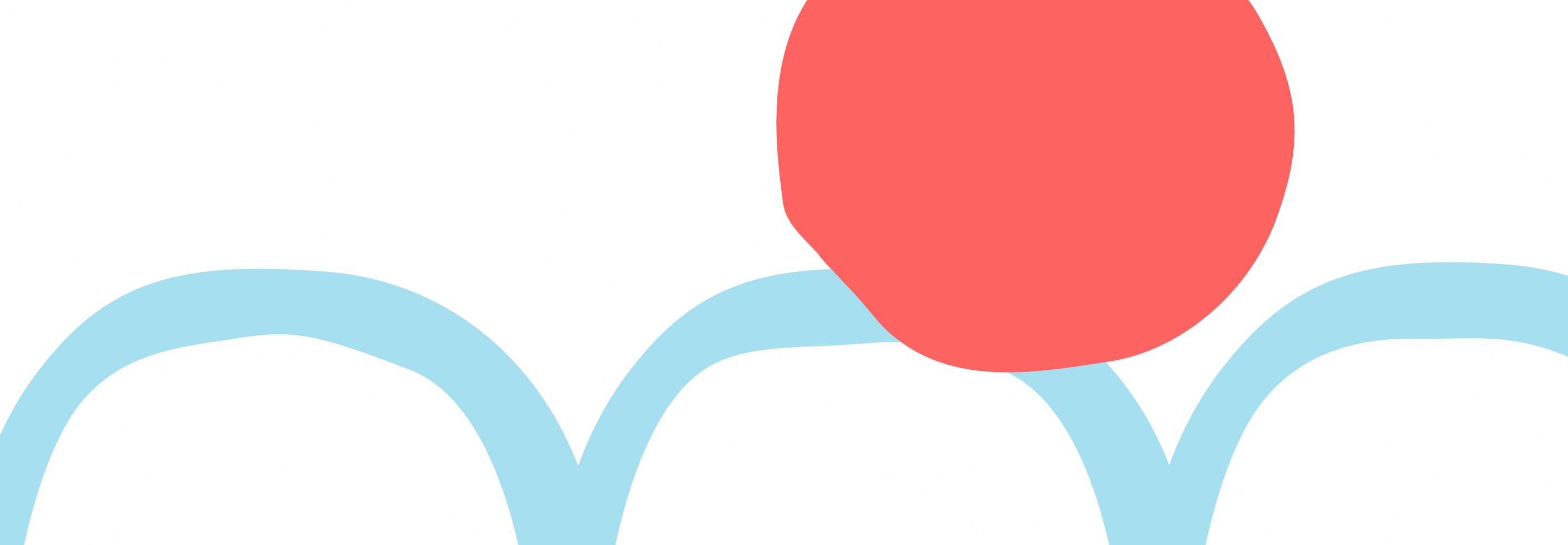
Should a student become ill or injured during the school day, every effort will be made to contact the parents. If neither parent can be reached, the person listed on the emergency form will be contacted to care for the student. If this is a medical emergency, the student will be taken to the hospital unless you have instructed us otherwise.

**Please see addendum page for COVID-19 related procedures.



NON-PARENT

For your student's safety, "Adventures in Summer Learning" will not release a student to anyone other than the parent, any individual listed on the alternate pick-up form, or prior arranged carpool, without the parent's permission in writing. The office needs a signed and dated note giving permission for a change in transportation by the morning of the change. You may also email schamberlin@springer-ld.org.



ARRIVAL

Please arrive 5 minutes prior to the start of your student's first class of the day so they have time to enter the building and prepare for class.

**If you student is driving on their own, they may park and enter the building under the orange awning.*

**If you should arrive after the classes have gone in, please park your car and escort your child into the entrance area where we will sign in your child and walk him/her to class.*

DISMISSAL

You will enter the carpool line from the Grandin Road entrance. To facilitate timely pick up, display your sign in the front window with your student's name and a teacher will escort your student to the car. Once your child is in the car, a staff member will indicate when all students are clear and to exit onto Grandin Rd.



PARKING LOT LOGISTICS

The typical traffic pattern will be to enter using the Grandin Road entrance and exit using the Grandin Road exit. **HOWEVER**, this will require flexibility as there is ongoing construction on the property. If traffic patterns are impacted by construction, please use your best judgement and follow the signs and flow of traffic.

***Please see attached maps for visual representaion of arrival and dismissal processes.*



Teacher Observations

While we do not offer a formal assessment to determine whether your student may have a learning disability or attention issues, we can offer you our professional observations of your student in a classroom setting. This feedback will be in the form of a report in which you will receive a written summary of your student's progress in; Language Arts, Math, Study Skills or Social Skills. The summary will address concepts and skills worked on and strategies introduced. Our hope is that this report provides helpful and valuable information for you and your student's school.

Parent/Teacher Phone Call

One of your student's teachers will contact you in order to introduce themselves and discuss shared ideas regarding goals for your student in the summer program. We have found this to be mutually valuable for both parents and teachers to facilitate the most meaningful experience for your student. Open communication is enthusiastically encouraged at Springer! If you have any questions or concerns during the summer program, please contact Shelby Chamberlin at schamberlin@springer-id.org and 513-871-6080 x210.

THE DAILY PROGRAM

HIGH SCHOOL

Each day your student will have the opportunity to expand on skills and strategies in small group instruction within the areas of writing and study skills.

(Please note, areas of instruction are based on the courses your child is enrolled in.)

12:30-2:00 High School Writing
2:30-4:00 Study Skills

2:00-3:30 Writing for the Common App *(July 10-July 14th only)*

We know that each student's needs may differ throughout this time, therefore breaks will be offered throughout the day as well as honored when advocated for. Students may also bring a snack to support their mental energy and attention.

Meet Our Teachers!



Kendra Sprague



Whitney Jorgensen

High School Writing: Kendra Sprague
Writing for the Common App: Kendra Sprague
Study Skills: Whitney Jorgensen

ADDITIONAL INFORMATION

Health and Safety

Should a student become ill or injured during the school day, every effort will be made to contact the parents/guardians. If contact is unsuccessful, the person listed on the emergency form will be contacted to care for the student. If the incident is a medical emergency, the student will be taken to the hospital unless otherwise instructed on the emergency information form.

***Please see addendum page for COVID-19 related procedures.*

Medication

If your student is on medication during the school year, we ask that he/she continues during the summer program. Our teachers want your student to be able to maximize the benefits of the direct instruction provided.

Please note: Permission to administer medication must be on file for Springer staff to distribute any prescribed medication.

Dress Code

Students should dress in an appropriate non-distracting manner for school. We define appropriate dress to include slacks, jeans or sweatpants, shorts or skorts. All clothing should fit in a way that is modest (e.g. no drooping pants, low risers, sheer tops or exposed midriffs). Shirts with messages other than school, arts, sports, company logos or environmental messages are not permitted. Shoes should tie (sneakers or other closed shoe) to enable students to fully participate in all aspects of the program.

Behavior Policy

We share in our parents concerns regarding standards of behavior and strive to build strong, self-disciplined citizens. Towards this purpose we have three rules: 1) Respect yourself, 2) Respect others, 3) Respect property. Each teacher develops specific classroom rules and all discipline in school will be focused on guiding students to practice our three Rules of Respect (*All interventions and consequences are made based upon the situation and the individual involved*). A problem solving approach is used to address the student conduct. Physical or verbal aggression, and property damage are not acceptable at Springer School and Center and may lead to dismissal from the program.

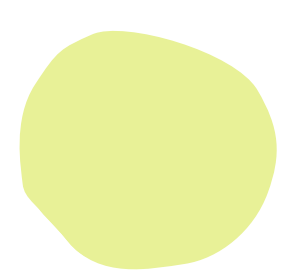
Harmful Items

Students may not use or have in their possession items which are deemed to be weapons or items which may cause harm to self, others or property. This includes but is not limited to: firearms, knives, explosives, matches and lighters.

Please note: Knives includes pocket/pen knives.

Hand-Held Electronics/Cell Phones

Cell phone use is not permitted on school grounds. If a student has a cell phone it must be turned off and kept in their pocket while at Springer. Electronic devices may not be used on campus.



HIGH SCHOOL CALENDAR

Wednesday, June 21

Parent workshop: Focus on the strategies that are being taught to your child to help support them at home.

Monday, July 10

First day

Friday, July 14

Last day for *Writing for Common App*

Wednesday, July 19

Social skills parent workshop: Tips and strategies.

Friday, July 21

Last day for *High School Writing and Study Skills*



COVID-19 PREPAREDNESS PLAN

Adventures in Summer Learning 2023

We are excited to welcome students and families to the Springer campus for our Adventures in Summer Learning programs. To help you prepare for summer COVID procedures and expectations, we have compiled the following information for your review.

Please read below for a detailed outline of Springer's COVID-19 preparedness plan for the 2023 summer programs.

1. Families are asked to conduct self-health assessment at home prior to coming to campus. Symptoms to look for as follows:
 - Temperature of 100°F or higher
 - Sore throat
 - **NEW** uncontrolled cough that causes difficulty breathing (for students with chronic allergic/asthmatic cough, it would be a change from their baseline)
 - Diarrhea, vomiting or abdominal pain
 - **NEW** onset of severe headache, especially with a fever
 - Had close contact with someone with a confirmed case of COVID-19 (close contact is within 3 feet of an infected person for at least 15 cumulative minutes)
 - Had close contact with someone under quarantine for possible exposure to COVID-19 (close contact is within 3 feet of an infected person for at least 15 cumulative minutes)
2. If a student or staff member has a temperature of 100.4 or higher, we ask that you consult with your doctor before returning.
3. If a student or staff member becomes symptomatic while on campus, they will be sent home early.
4. If a student tests positive for COVID or has had close contact with someone who is positive, families should notify the school (close contact is defined within 3 feet of an infected person for at least 15 cumulative minutes).
5. Students will clean their hands upon arrival and departure from each classroom.
6. Desks and other surfaces will be disinfected after each cohort group and more frequently as necessary.
7. Appropriate distance between students and teacher/staff will be maintained as often as possible.
8. Should suspected, probable or confirmed cases be reported, additional and appropriate communication will promptly follow to all staff and families. **Suspected, probable or confirmed cases should be reported to Shelby Chamberlin at schamberlin@springer-ld.org.**

Diligent effort will be made to protect a student or staff member's privacy. Please feel free to contact us with any questions or concerns at 513-871-6080 x404.

We are looking forward to summer!

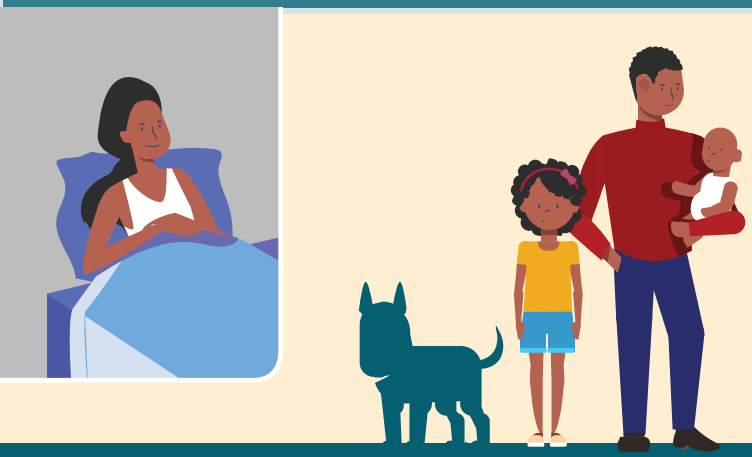
Sincerely,

Shelby Chamberlin

Shelby Chamberlin
Summer Operations Lead

Isolate and take precautions if you have or suspect you have COVID-19

ISOLATION



Stay home and away from others

Wear a high-quality mask if you must be around others

Start counting days

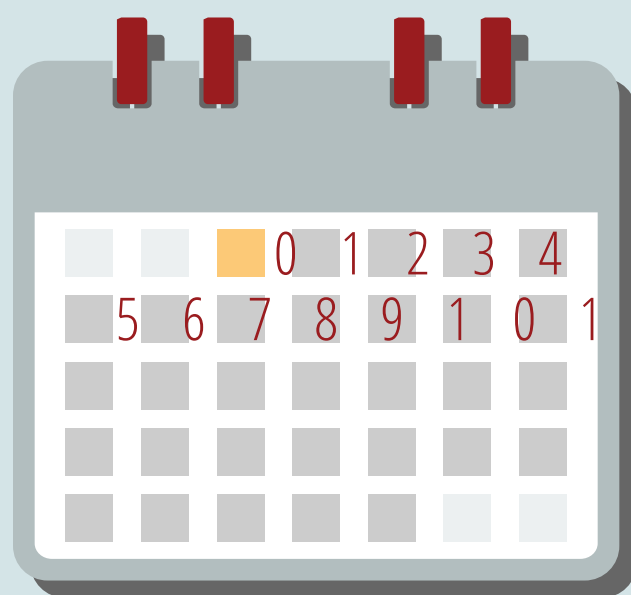
Day 0 is the day your symptoms started

If you never had symptoms, day 0 is the day you took a COVID-19 test



Watch for emergency warning signs, like trouble breathing

Seek help if they develop



AFTER ISOLATION

Until at least day 11, avoid being around people who are more likely to get very sick

Wear a high-quality mask when around others indoors



Removing your mask

After ending isolation, wear your mask through day 10

OR

Take 2 antigen tests, 48 hours apart

If both tests are negative, you may remove your mask sooner than day 10



ENDING ISOLATION

Isolate to day 6 or later, if you

- never had symptoms or symptoms are improving, and
- are fever-free for 24 hours without the use of fever-reducing medication

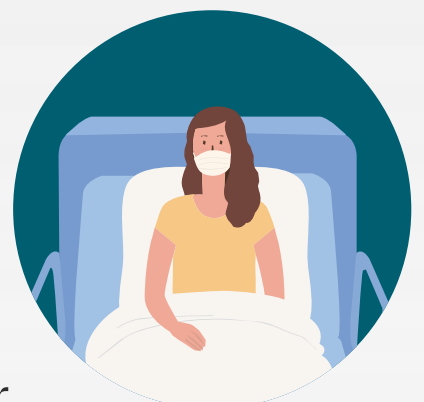


Continue to isolate if your fever persists or other symptoms have not improved

Isolate through day 10, if you experienced moderate illness, like shortness of breath or difficulty breathing

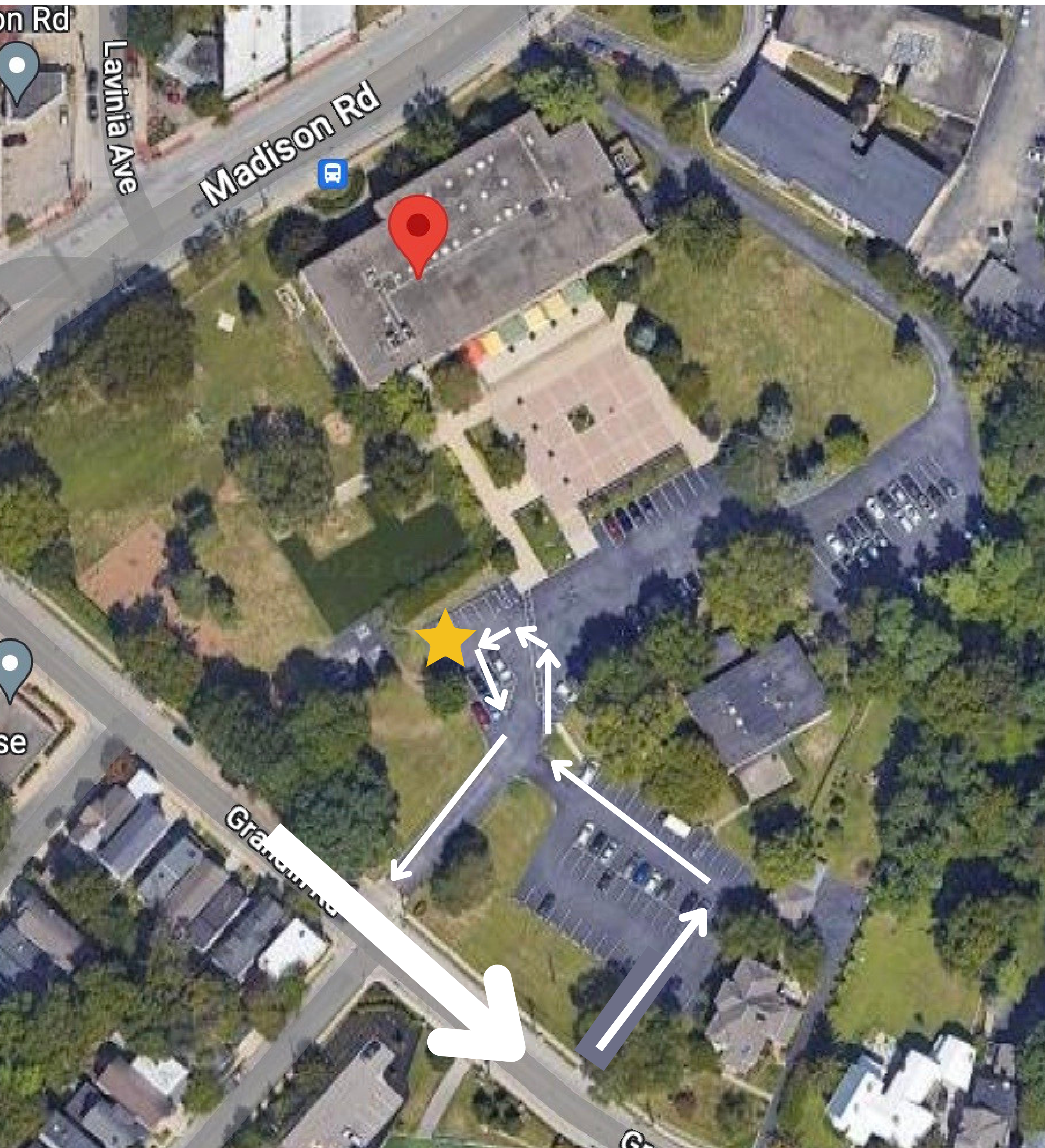
Isolate through day 10 and talk with a healthcare provider before you end isolation, if you

- were hospitalized, or
- have a weakened immune system



Adventure in Summer Learning 2023

Arrival and Dismissal Traffic Pattern



Upon arrival and dismissal, please enter the upper lot via Grandin Road. The carline will loop throughout the upper parking lot and you will pick up your child in the main lot (noted by a star on the map). Once each child is safely in their car, the traffic will be directed to exit via the main lot entrance onto Grandin Road.

Please be flexible as traffic patterns may change due to construction.