

**SUCCESS  
STARTS  
HERE**



**Title:** Support Services Liaison

**Anticipated start date:** August 1, 2024

### About Springer

Springer School and Center is a caring community supporting students diagnosed with learning disabilities and their families. Springer serves the community through four pillars: Springer Lower School and Middle School (grades 1-8), Springer High School (grades 9-10), Springer Diagnostic Center, and Springer Learning Center. Springer faculty and staff embrace the organization's mission and incorporate the core values of student growth/development, staff expertise/development, partnership, communication, and stability in their daily work.

### Position Summary

The Support Services Liaison facilitates access to the Peterson Scholarship by collaborating with Springer teachers, Springer therapists, and local school districts to ensure compliance and progress monitoring. Support Services Liaisons like all Springer employees, embrace the organization's mission of empowering students with learning disabilities to lead successful lives. Each employee remains committed to Springer's core values and works every day to contribute to the betterment of the community.

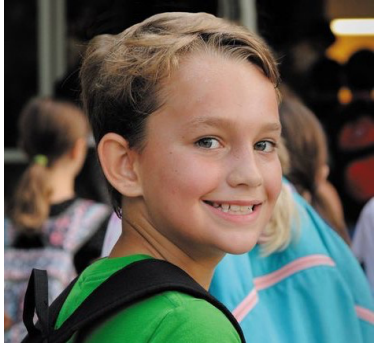
### Job Goals

- Draft IEPs, ETRs and accommodation plans by gathering information regarding specific students from a variety of constituents.
- Take an active role in IEP and ETR meetings facilitating partnership between Springer, parents, and local school districts while ensuring the best interests of each child.
- Lead the preparation, collection and scoring of school wide assessments for students.

### Preferred Qualifications

- Bachelor's degree or Master's degree in Special Education or School Psychology.
- Active Intervention Specialist or School Psychologist license.
- Experience supporting families of students with learning disabilities.
- Experience writing Individualized Education Plans (IEPs).
- Professional experience interpreting student assessment data.

**Key Characteristics:** Timely, accurate, and detail oriented



**Terms of Employment:** Part Time (3 days per week), 10 months per year (school year).

### How to Apply

Qualified applicants should email a resume, cover letter and employment application (found at [Springer-LD.org/employment](http://Springer-LD.org/employment)) to Karen Robinson at [krobinson@springer-ld.org](mailto:krobinson@springer-ld.org). The subject line of that email should reflect the position title.

*Springer School and Center considers all applicants for all positions without regard to race, religion, gender, sexual orientation, national origin, age, disability, marital or veteran status, or any other legally protected status.*

**SUCCESS  
STARTS  
HERE**



